

VRS VIP

Vehicle Inspection Package



Video Based System Enabling Automated Vehicle Valet and Management

The screenshot displays the VRS VIP web interface. On the left, the 'Image View' section shows a site map and a list of images for a white Volvo S60. The vehicle details include: Name: Jonny, Lane: Terminal 3, Plate: 5153831, Time: 2014-05-19 16:32:25, Make: Volvo, Model: S60. On the right, the 'Alerts list' section shows an alert for a Gold Member at Terminal 3. The alert details include: Lane: Terminal 3, Owner: Jonny, List: Gold Member, HotList description: No Description, Date: 2014-05-19, Time: 16:32:25, Type: User Alert, Confidence: 95, Plate: 5153831, Speed: 0, Make: Volvo, Model: S60. A callout box points to the 'Location: A23' field in the 'Comments' section, labeled 'Entry for Parking Position'.

Enables:

- Damage Inspection/Liability
- Parking Spot Management
- Effective Vehicle Retrieval
- Process Management

Operational Features:

License plate and color overview images of each vehicle at Drop-off and Pickup

Export queries results (time, date, position, plate number and Images)

Report generation for vehicle claims purposes (Drop-off versus Pickup comparison)

Rich Functionality

VRS Vehicle Inspection Package (VIP) enables the car park management to cost effectively document, store, retrieve, review verify and report the condition of each vehicle upon entry and exit from the car park in order to assess the validity of damage claims.

Simple management

The VRS VIP system is easily integrated, installed and configured, and also provides valuable reporting, monitoring and operational data. It is fully web-enabled, supporting these functions from any standard browser. Individual vehicle reports may also be exported as PDF files by the car park management to the vehicle owner when relevant.

Hardware Features

- VRS N50 or N60 Rugged compact 2M IP cameras with live streaming for 24/7 operation
- Vandal proof IP67 housing for outdoor or indoor applications
- Illumination for all environments and license plate types
- Ruggedized Lane controller VRS LC2100
- Power over Ethernet for Imaging Units
- Indoor/Outdoor and all weather conditions (imaging units range from -40°C to +60°C)

Software features

- All functionality, including configuration, management and reporting via one interface
- Provides reports according to a variety of parameters
- Integrates via simple and friendly API based on Windows WCF and XML
- Transmits small data file for quick processing, low bandwidth and effective storage
- Can integrate with databases of returning customers and loyalty program

How it Works

From installation, deployment and configuration, through to management and reporting, VRS VIP provides a simple and cost effective operational solution to Valet logistics in parking facilities.

What is Required

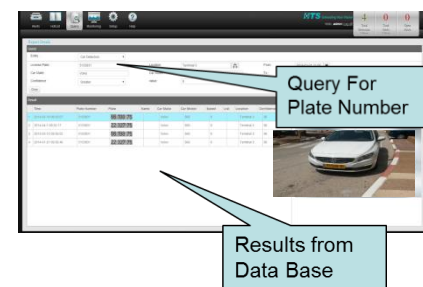
- Additional imaging units added to the site, to visually document the vehicle from all angles

Vehicle Drop-off Process

- As a new vehicle enters the facility, it's license plate is captured, recognized and stored with images of the vehicle from all angles.
- The vehicle owner's name can be added for more personalized service
- A parking spot number can be allocated along with a valet ticket number
- The event is stored with all relevant information, including time and date stamp

Vehicle Pickup Process

- Event retrieval via the License Plate Number
- Retrieval of vehicle from parking spot listed in the file
- As the vehicle exits the facility it's license plate is captured, recognized and stored with images of the vehicle from all angles.
- The event is stored along with the entry log, and includes the exit time and date stamp.



Report Generation

- The system can be queried according to a number or parameters; License Plate Number, time, date etc.
- Reports include all entry and exit images of the vehicle .

Damage Claim Query

- Input plate number
- All vehicle transaction events will be retrieved (Drop-off, Pickup)
- All Vehicle images will be retrieved from the system (Drop-off vs. Pickup)

